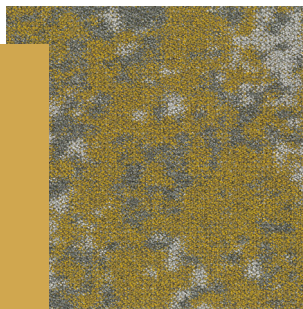


# BLOQ

creative  
carpet tiles



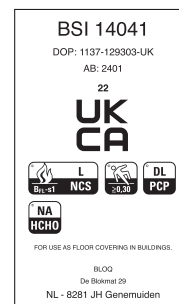
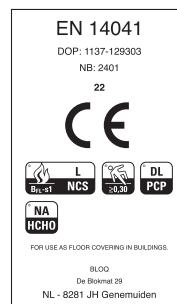
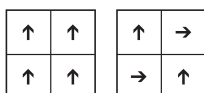
## THE CREATE LARGE

### SPECIFICATIONS

<b>TYPE OF MANUFACTURE</b>	Tufted Patterned Loop Pile 1/10"
ISO 2424	
<b>PILE FIBER COMPOSITION</b>	100% Polyamide 6
ISO 2424	Solution Dyed Nylon made by Aquafil
<b>SECONDARY BACKING</b>	Bitback, Modified Bitumen
ISO 2424	70% Recycled Content
<b>DIMENSION</b>	50 x 50 cm
EN ISO 24342	
<b>PILE WEIGHT</b>	1 000 g/m <sup>2</sup>
ISO 8543	
<b>SURFACE PILE WEIGHT</b>	590 g/m <sup>2</sup>
ISO 8543	
<b>TOTAL WEIGHT</b>	5 000 g/m <sup>2</sup>
ISO 8543	
<b>TOTAL THICKNESS</b>	8.5 mm
ISO 1765	
<b>PILE HEIGHT</b>	4.6 mm
ISO 1766	
<b>PILE DENSITY</b>	0.126 g/m <sup>3</sup>
ISO 8543	
<b>NUMBER OF TUFTS</b>	215 000 /m <sup>2</sup>
ISO 1763	
<b>DIMENSIONAL STABILITY</b>	≤ 0.2%
ISO 2551	
<b>NUMBER OF COLOURS</b>	LARGE: 6
<b>PACKAGING</b>	Box: 16 tiles / 4 m <sup>2</sup> Pallet: 160 m <sup>2</sup>

### PERFORMANCE

<b>CLASSIFICATION</b>	33
EN 1307	
<b>LUXURY RATING</b>	LC2
EN 1307	
<b>CASTOR CHAIR RATING</b>	A: Intensive use
EN 985	
<b>FIRE CLASSIFICATION</b>	B <sub>f1</sub> -s1
EN 13501-1	
<b>IMPACT SOUND INSULATION</b>	ΔL <sub>w</sub> : 26 dB
EN ISO 10140-3	
<b>SOUND ABSORPTION</b>	Frequency Hz 125 250 500 1000 2000 4000
EN ISO 354	α <sub>s</sub> 0.01 0.03 0.10 0.22 0.36 0.46
<b>NOISE REDUCTION</b>	α <sub>w</sub> : 0.20
EN ISO 354	
<b>PERMANENT ANTISTATIC</b>	≤ 2 kV
ISO 6356	
<b>TRANSVERSAL RESISTANCE</b>	≤ 1 X 10 <sup>9</sup> Ohm
ISO 10965	
<b>THERMAL RESISTANCE</b>	0.079 m <sup>2</sup> /K/W
ISO 8302	
<b>COLOUR FASTNESS TO LIGHT</b>	≥ 7
EN ISO 105-B02	
<b>COLOUR FASTNESS TO WATER</b>	≥ 4
EN ISO 105-E01	
<b>RUBBING FASTNESS</b>	≥ 4
EN ISO 105-X12	
<b>GUT N° PRODIS</b>	4AECEB09



05/03/2024

All rights reserved to alter technical specifications.