

—  
BLOQ

creative  
carpet tiles



THE TEXTURED  
POS&NEG



# Part of The Textured

The Textured collection plays with soft tones and textures. Its tactile look is inspired by coarsely woven fabrics such as linen. As part of The Textured collection, POS&NEG features an organic and arrhythmic play of contrast, on 50 x 50 cm tiles.



## Textures



## Contrast



## Tactility





THE TEXTURED  
POS&NEG



Inspiration  
is everywhere



# Play of contrast

The design of POS&NEG is inspired by the bark of a tree. Positive and negative come together in a playful yet elegant combo of light and dark. The collection is composed of soft pastel colours in two opposite shades: POS and its mirror image NEG.



*Experience  
the beauty  
of bark*



POS 816 NUT



NEG 817 PINE



©Painting: Pouké Halpern

NEG 817, POS 816





POS 231, NEG 232



©Painting: Pouk Halpern

NEG 232



POS 231 TEA



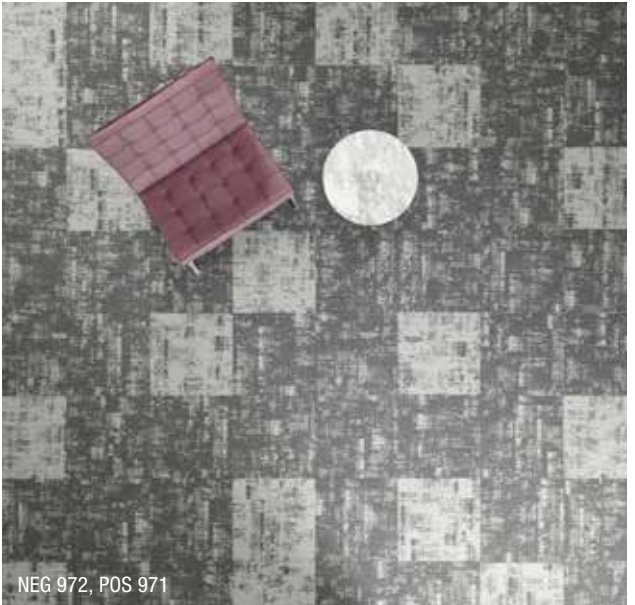
NEG 232 PEAR





©Painting: Pouke Halpern

POS 971



NEG 972, POS 971

## Apart or together

POS and NEG are statement designs on their own, but equally strong when combined. Just like Yin and Yang. Combine them cleverly to create a balanced result. In a checkerboard or running bond pattern, for a sense of duality that adds dimension to your floor design.



POS 971 GRIT



NEG 972 FOG





POS 626 FENNEL



NEG 627 ROSEMARY



©Painting: Fouké Halpern

POS 626, NEG 627



# Colour range

Ranging from warm to cold, but natural above all: the collection features eight soft pastel colours and darker shades. Each in POS and NEG versions. The bark-inspired tiles match perfectly with designs from the rest of The Textured collection, such as these tones from CANVAS.



POS 221 SALMON      NEG 222 PEACH



CANVAS 220 MELON

*Matching Canvas tones*  
←



POS 226 CORN      NEG 227 DUNE



CANVAS 225 AMBER



POS 231 TEA      NEG 232 PEAR



CANVAS 230 LIME



POS 816 NUT      NEG 817 PINE



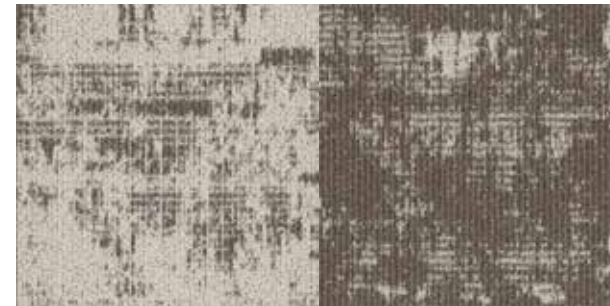
CANVAS 815 OLIVE



POS 626 FENNEL      NEG 627 ROSEMARY



CANVAS 625 SAGE



POS 821 CELERY      NEG 822 CEDAR



CANVAS 820 TIMBER



POS 980 SILT      NEG 981 FOSSIL



CANVAS 935 SLATE



POS 971 GRIT      NEG 972 FOG



CANVAS 970 STORM





POS 221, NEG 222, CANVAS 220



POS 221, NEG 222, CANVAS 220

## Dare to mix

Any combination with CANVAS makes for a striking, interesting and varied result. Be as bold as you like. You can incorporate a multitude of CANVAS tiles for a rather serene effect, while a majority of POS&NEG tones will produce an entirely different look. The possibilities are endless.



POS 221 SALMON



NEG 222 PEACH



CANVAS 220 MELON





NEG 981



POS 980 SILT



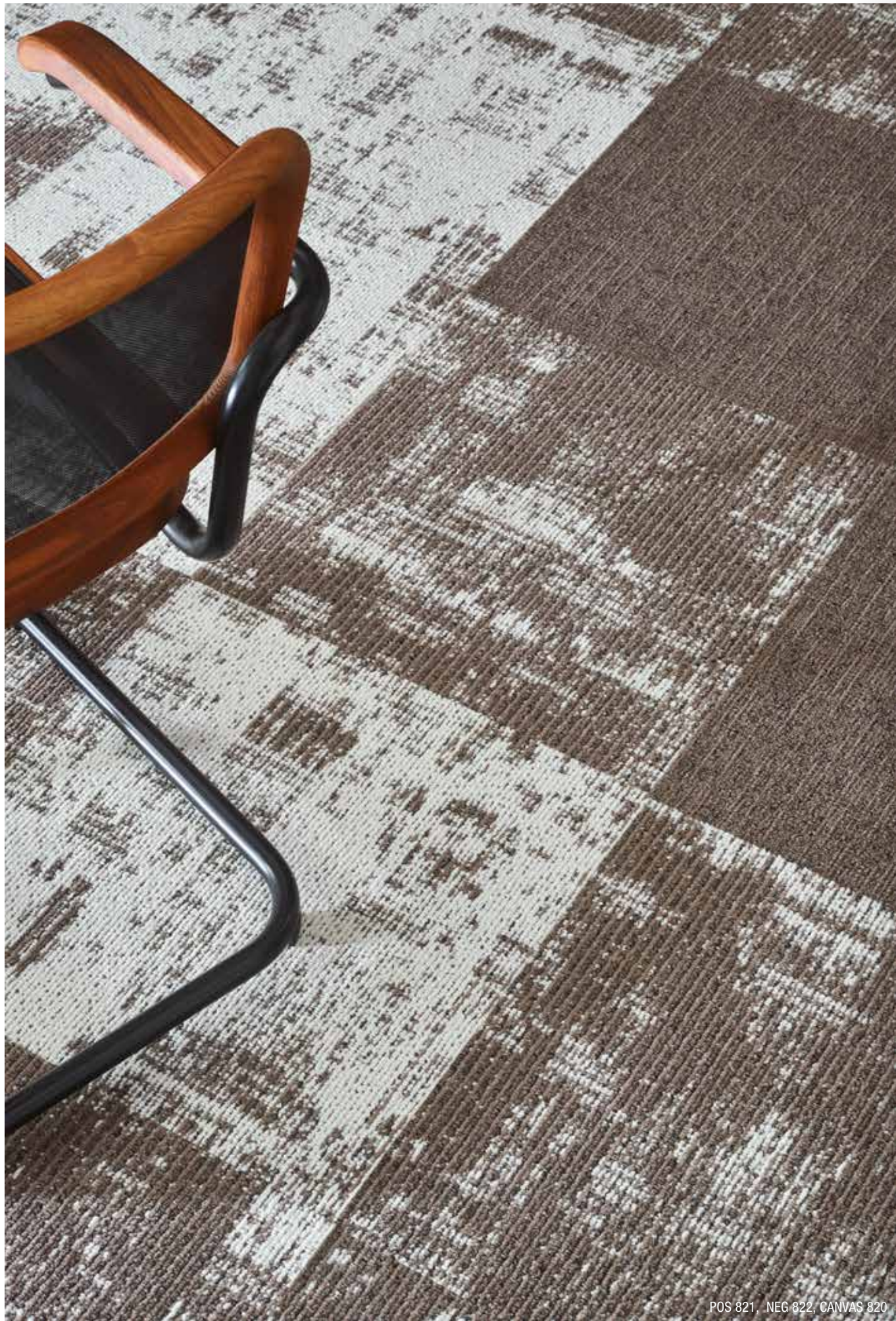
NEG 981 FOSSIL



©Painting: Pouke Halpern

POS 980, NEG 981





POS 821, NEG 822, CANVAS 820



©Painting: Poulkê Halpern

POS 821, NEG 822, CANVAS 820



POS 821 CELERY



NEG 822 CEDAR



CANVAS 820 TIMBER

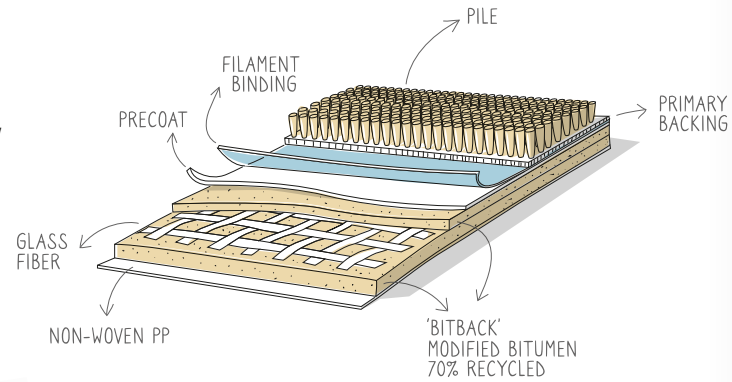


# Highlights

## DIMENSIONAL STABILITY & HIGH PERFORMANCE

BLOQ uses **glass fiber fleece**, which gives more dimensional stability ( $\leq 0.2\%$ ). The **durable quality** is guaranteed by multiple certifications:

- Commercial heavy classification (Class 33 - EN 1307)
- Suitable for castor chairs (EN 985)
- Colour fastness to light (EN ISO 105-B02)



## SOLUTION DYED YARNS

BLOQ uses 100% Polyamide 6 Solution Dyed Nylon from **Aquafil**, the best and leading supplier for carpet manufacturers. Solution dyed means **better colour fastness** and the best results to light and water.



## LIGHT REFLECTANCE VALUES

**Light Reflectance Value (LRV)** is a scale that measures visible and usable light reflected from an illuminated surface. The percentage identifies how much light a colour reflects or absorbs. 0% reflects no visible light, 100% reflects all light.

| POS | LRV <sub>av</sub> | L     |
|-----|-------------------|-------|
| 971 | 41.61             | 70.60 |
| 221 | 40.70             | 69.97 |
| 226 | 38.48             | 68.37 |
| 231 | 40.28             | 69.67 |
| 980 | 40.68             | 69.95 |
| 821 | 36.95             | 67.24 |
| 816 | 34.39             | 65.27 |
| 626 | 39.78             | 69.31 |

| NEG | LRV <sub>av</sub> | L     |
|-----|-------------------|-------|
| 972 | 23.48             | 55.57 |
| 222 | 23.69             | 55.78 |
| 227 | 24.28             | 56.36 |
| 232 | 20.73             | 52.66 |
| 981 | 15.57             | 46.42 |
| 822 | 17.54             | 48.93 |
| 817 | 20.89             | 52.83 |
| 627 | 20.06             | 51.90 |



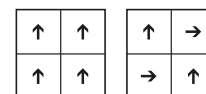
## THE TEXTURED POS&NEG

### SPECIFICATIONS

|                               |  |
|-------------------------------|--|
| <b>TYPE OF MANUFACTURE</b>    | Tufted Patterned Loop Pile 1/10"                               |
| ISO 2424                      |  |
| <b>PILE FIBER COMPOSITION</b> | 100% Polyamide 6   |
| ISO 2424                      | Solution Dyed Nylon made by Aquafil                            |
| <b>SECONDARY BACKING</b>      | Bitback, Modified Bitumen                                      |
| ISO 2424                      | 70% Recycled Content   |
| <b>DIMENSION</b>              | 50 x 50 cm   |
| EN ISO 24342                  |  |
| <b>PILE WEIGHT</b>            | 750 g/m <sup>2</sup>   |
| ISO 8543                      |  |
| <b>SURFACE PILE WEIGHT</b>    | 550 g/m <sup>2</sup>   |
| ISO 8543                      |  |
| <b>TOTAL WEIGHT</b>           | 4 400 g/m <sup>2</sup>   |
| ISO 8543                      |  |
| <b>TOTAL THICKNESS</b>        | 7.4 mm   |
| ISO 1765                      |  |
| <b>PILE HEIGHT</b>            | 4.3 mm   |
| ISO 1766                      |  |
| <b>PILE DENSITY</b>           | 0.128 g/m <sup>3</sup>   |
| ISO 8543                      |  |
| <b>NUMBER OF TUFTS</b>        | 152 700 /m <sup>2</sup>  |
| ISO 1763                      |  |
| <b>DIMENSIONAL STABILITY</b>  | $\leq 0.2\%$   |
| ISO 2551                      |  |
| <b>NUMBER OF COLOURS</b>      | 16   |
| <b>PACKAGING</b>              | Box: 20 tiles / 5 m <sup>2</sup><br>Pallet: 200 m <sup>2</sup> |

### PERFORMANCE

|                                 |  |
|---------------------------------|--|
| <b>CLASSIFICATION</b>           | 33                                       |
| EN 1307                         |  |
| <b>LUXURY RATING</b>            | LC2                                      |
| EN 1307                         |  |
| <b>CASTOR CHAIR RATING</b>      | A: Intensive use                         |
| EN 985                          |  |
| <b>FIRE CLASSIFICATION</b>      | B <sub>f</sub> -s1                       |
| EN 13501-1                      |  |
| <b>IMPACT SOUND INSULATION</b>  | $\Delta L_w$ : 28 dB                     |
| EN ISO 10140-3                  |  |
| <b>SOUND ABSORPTION</b>         | Frequency Hz 125 250 500 1000 2000 4000  |
| EN ISO 354                      | $\alpha_s$ 0.00 0.05 0.10 0.20 0.40 0.50 |
| <b>NOISE REDUCTION</b>          | $\alpha_w$ : 0.20                        |
| EN ISO 354                      |  |
| <b>PERMANENT ANTISTATIC</b>     | $\leq 2$ kV                              |
| ISO 6356                        |  |
| <b>TRANSVERSAL RESISTANCE</b>   | $\leq 1 \times 10^9$ Ohm                 |
| ISO 10965                       |  |
| <b>THERMAL RESISTANCE</b>       | 0.085 m <sup>2</sup> /KW                 |
| ISO 8302                        |  |
| <b>COLOUR FASTNESS TO LIGHT</b> | $\geq 7$                                 |
| EN ISO 105-B02                  |  |
| <b>COLOUR FASTNESS TO WATER</b> | $\geq 4$                                 |
| EN ISO 105-E01                  |  |
| <b>RUBBING FASTNESS</b>         | $\geq 4$                                 |
| EN ISO 105-X12                  |  |
| <b>GUT N° PRODIS</b>            | BC5AB0C0                                 |



All rights reserved to alter technical specifications.



[www.bloq.nl](http://www.bloq.nl)